

REPERTORY ORCHESTRA Audition Requirements

Students auditioning for Repertory Orchestra should perform the following for the audition video **in the order** listed below.

1. Excerpts – 4

- ☐ Perform all excerpts included in this document in the order they are listed (i.e. #1, #2, etc)

2. Scales – 2

- ☐ For the Repertory Violin audition, please play:
 - **C Major** – 2 octaves
 - **F Major** – 2 octaves
 - ✓ Examples are on the last page of this document

3. Solo – 1 (your choice)

- ☐ Select a solo, or a passage of a solo, that best represents your skills at the time of the audition. About 2-3 minutes of music.
- ☐ On your video, announce the title of the solo and the composer.
- ☐ Keep in mind that you have to upload your full audition video to YouTube, so the longer solo you play, the longer it may take to upload your video.

EXCERPT #1

SOURCE: Gustav Holst, arr. Deborah Baker Monday: JUPITER from “The Planets”

Tempo: Quarter note = 80

Time Signature: 3 / 4

52 55 56 57 58 59

60 61 62 63 64 65 66 67

68 69 70 71

cresc. *ff* *rit.*

Violin (V) entry at measure 55.

EXCERPT #2

SOURCE: Edvard Grieg, arr. Jeff Bailey: GAVOTTE from “Holberg Suite”

Tempo: Quarter note = 132

Time Signature: 4/4

62 Tempo I 63 64 65 66 67 68 69 70 71 72 73 74 75 76

mp *f* *p*

Tempo I marking at measure 62.

EXCERPT #3

SOURCE: Richard Wagner, arr. Isaac: SUITE from “TANNHAUSER” III. Grand March

TEMPO: Quarter note = 120

TIME SIGNATURE: 4 / 4

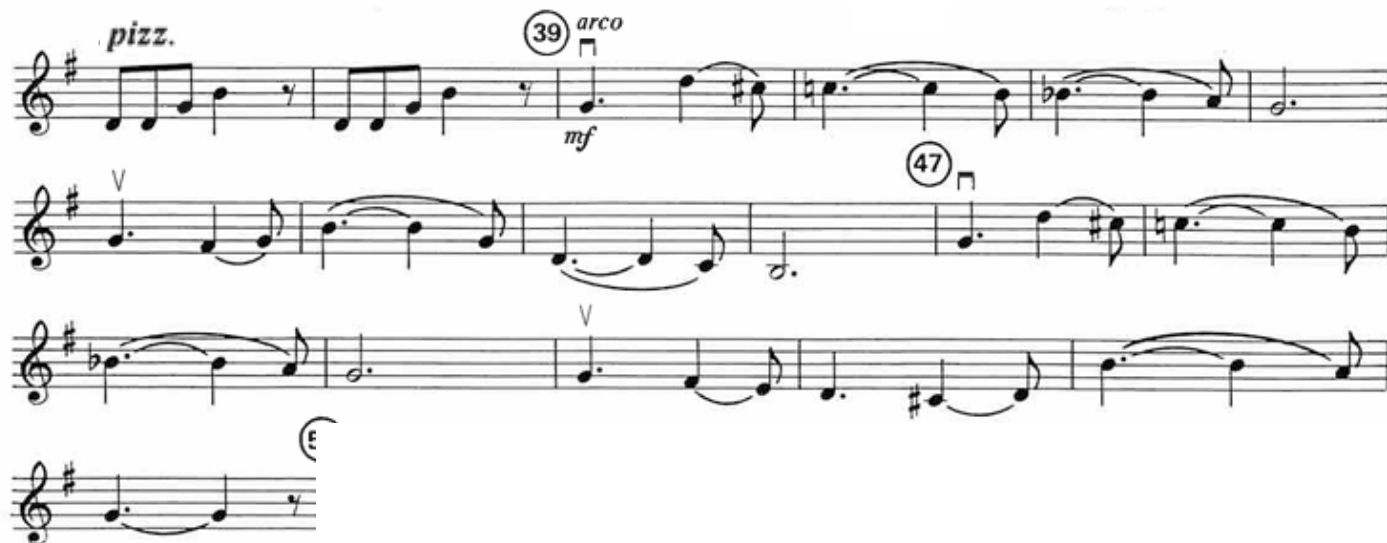
Violin score for measures 50 through 67. The music is in 4/4 time, key of B-flat major (two flats). The score is written on six staves. Measure 50 is marked with a circled 50 and a forte (ff) dynamic. Measure 58 is marked with a circled 58 and includes fingering numbers 1, 2, 3, and 1. Measure 67 is marked with a circled 67 and includes a forte (ff) dynamic and a triplet of eighth notes. The music consists of eighth and quarter notes, with some triplets and slurs.

EXCERPT #4

SOURCE: Richard Wagner, arr. Isaac: SUITE from “TANNHAUSER” II. Evening Star

TEMPO: Dotted Quarter note = 60

TIME SIGNATURE: 6 / 8



SCALES

This is an example format. You may perform the scales listed in a different format if that is how you have studied with your private teacher (i.e. repeating the top note, turns, tempo, dynamics, etc.). Judges will be primarily listening for rhythmic steadiness, intonation, and sound quality.

SCALE #1: C Major – 2 Octaves



SCALE #2: F Major – 2 Octaves

