

## REPERTORY ORCHESTRA Audition Requirements

Students auditioning for Repertory Orchestra should perform the following for the audition video **in the order** listed below.

### 1. Excerpts – 2

- a. Perform all excerpts included in this document in the order they are listed (i.e. #1, #2, etc)

### 2. Scales – 2

- a. For the Repertory Trumpet audition, please play:
  - G Major – 2 octaves
  - Chromatic Scale, starting at your lowest note up to your highest note and back down.
  - Examples are on the last page of this document

**\*A NOTE ABOUT CHROMATIC SCALES for Winds and Brass:** The examples you may see in your audition requirements for a full range chromatic scale is just that - an example. We are NOT expecting you to play the chromatic scale as listed on the audition requirements for your instrument. What the judges are looking for is to hear your CURRENT range on your instrument. Start with your lowest comfortable note and play up to your highest comfortable note and back down.

### 3. Solo – 1 (your choice)

- b. Select a solo, or a passage of a solo, that best represents your skills at the time of the audition. About 2-4 total minutes of music.
- c. On your video, announce the title of the solo and the composer.
- d. Keep in mind that you have to upload your full audition video to YouTube, so the longer solo you play, the longer it may take to upload your video.

**EXCERPT #1**

**Trumpet in Bb**

SOURCE: Andrew Lloyd Webber, arr. Custer: Phantom of the Opera Suite: mm. mm.29 – 49 **with repeats**

Tempo: Quarter note = 116

Musical score for Excerpt #1, Trumpet in Bb, measures 29-49. The score is written in treble clef with a key signature of one flat (Bb) and a 4/4 time signature. It begins at measure 29, marked with a box containing the number 30. The first staff shows a series of eighth notes with accents, starting with a *ff* dynamic. The second staff contains two first and second endings, with dynamics *sfp cresc.* and *ff*. The third staff starts at measure 39 and continues with eighth notes and accents. The fourth staff also contains two first and second endings, ending with a double bar line and repeat sign.

**EXCERPT #2**

**Trumpet in Bb**

SOURCE: Andrew Lloyd Webber, arr. Custer: Phantom of the Opera Suite: mm. 106 – downbeat mm.114

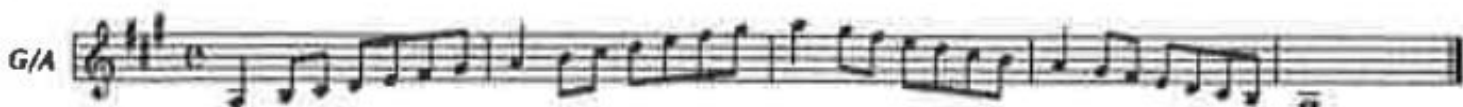
Tempo: Dotted quarter note = 68

Musical score for Excerpt #2, Trumpet in Bb, measures 106-114. The score is written in treble clef with a key signature of one flat (Bb) and a 6/8 time signature. It begins at measure 106, marked with a box containing the number 106. The first staff shows a series of eighth notes with accents, starting with a *f* dynamic. The second staff continues with eighth notes and accents. The third staff starts at measure 114, marked with a box containing the number 114, and includes the instruction *(♩=♩) soli* and a *p* dynamic.

## SCALES

This is an example format. You may perform the scales listed in a different format if that is how you have studied with your private teacher (i.e. repeating the top note, turns, tempo, dynamics, etc.). Judges will be primarily listening for rhythmic steadiness, intonation, and sound quality.

### SCALE #1: G Major – 2 Octaves



### SCALE #2: Chromatic scale, starting at your lowest note up to your highest note and back down.

