

CKYO Performance Dress Order Form – 2022-2023



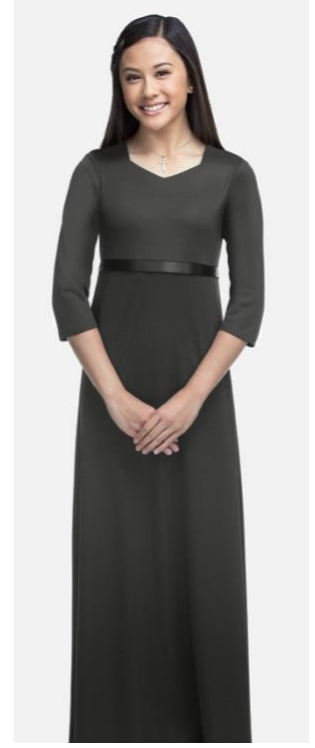
OPTION 1
Empire skirt with large scoop neck – ribbon under bust



OPTION 2
Empire skirt with round neck - piping under bust



OPTION 3
Empire skirt with sweetheart neck – piping under bust



OPTION 4
Empire skirt w/ square sweetheart neck – ribbon under bust



OPTION 5
Princess skirt w/ boatneck – seaming in front



OPTION 6
Princess skirt w/ cowl neck – seaming in front

NAME: _____

EMAIL: _____

CKYO Orchestra: Symphony Concert Repertory

DRESS I AM ORDERING:
 ___ Option 1 ___ Option 2 ___ Option 3
 ___ Option 4 ___ Option 5 ___ Option 6

SIZE I AM ORDERING or MEASUREMENTS PROVIDED*:
 SIZE: _____ or BUST: _____ (in) WAIST: _____ (in)

- SIZING CHART is available below.
- If providing measurements, instructions are below.
- If you need to be measured or want to try a size, please contact the office.
- These dresses can run a little snug through the bust and arms.
- If you want to order one size larger, so you can grow into it and didn't list the size above, please let us know.
- Some CKYO Cellists prefer the Princess Skirt (Option 5 or 6) because it gives you a little more room in the hips.
- **This Order form is due: MONDAY, SEPTEMBER 12, 2022** and we expect the dresses to arrive early-October. First concert is November 6.

SIZING CHARTS

Formal Fashions Misses Dresses																		
Standard length hts to 5'9" including shoe with heel - Tall sizes available																		
	0	2	4	6	8	10	12	14	16	18	20	22	24	26	28	30	32	34
Bust (max)	30	31	32	33	34	35.5	37	38.5	40	42	44	46	48	50	52	54	56	58
Waist (max)	28	29	30	31	32	33.5	35	36.5	38	40	42	44	46	48	50	52	54	56
Hip (max)	34	35	36	37	38	39.5	41	42.5	44	46	48	50	52	54	56	58	60	62

Childrens Blouses & Dresses					
	5	7	9	11	13
Bust (max)	25	26	27	28	29
Waist (max)	24	25	26	27	28
Hip (max)	27	28	29	30	31
Fits to Height	4'9"	4'11"	5'1"	5'3"	5'5"

How to measure for her garments

Height: With shoes on, stand with your feet slightly apart and your back to a wall. The measurement from the top of your head to the floor is your height.

Bust Size: Measure snugly (under arms) around fullest part of bust. Keep measuring tape parallel to ground.

Waist Size: Measure snugly around the narrowest part of waist, usually the belly button area.

Hip Size: Measure snugly around the fullest part of hips.

NEW DRESSES are \$70.00
(shipping is included)

If you already have an all black, floor length dress with sleeves for your school choir or orchestra, you may wear that for CKYO Concerts. Shoulders and upper arms should be covered. If you have a dress from previous years, please be sure to try on your dress at home now! **CKYO can resell a dress that no longer fits you to another student if you bring it to your seating audition or first rehearsal.** If you want to resell, we suggest pricing it between \$25 (if older than a few years) to \$60 (if you only wore it three times during the 2021-2022 season).